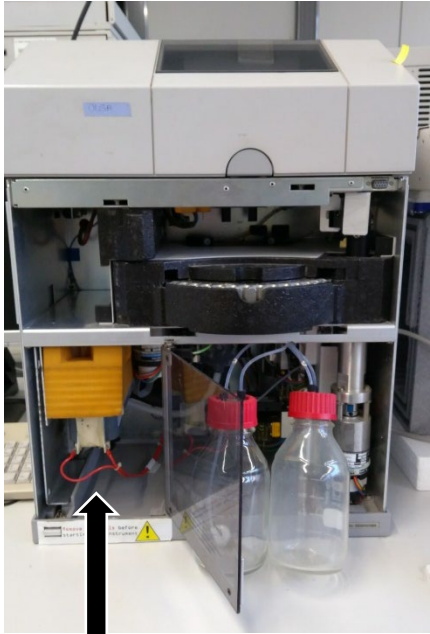


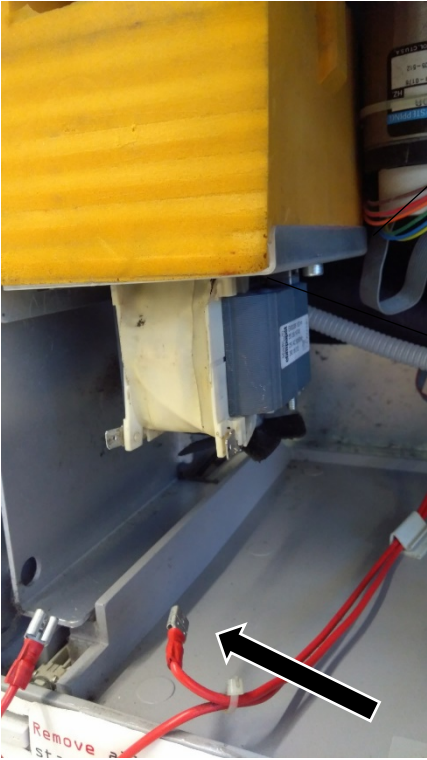
Replacement of membrane (air pump CE G1600)

1. Remove front cover

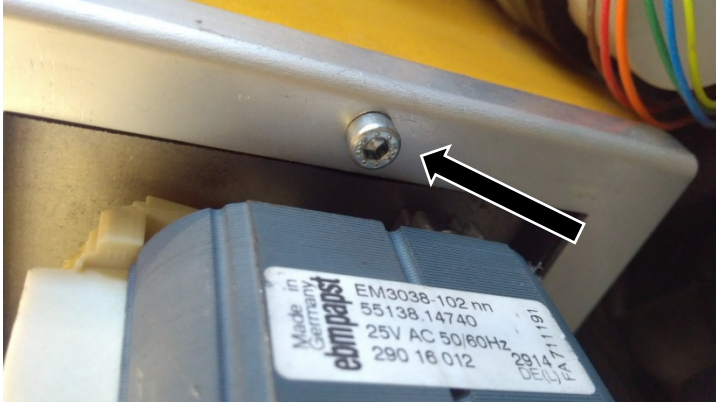


Air pump in foam

2. Remove electrical contact

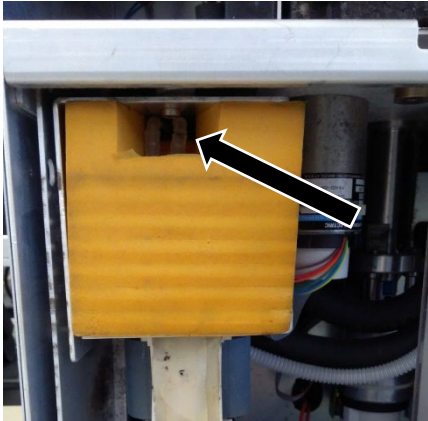


3. Unscrew

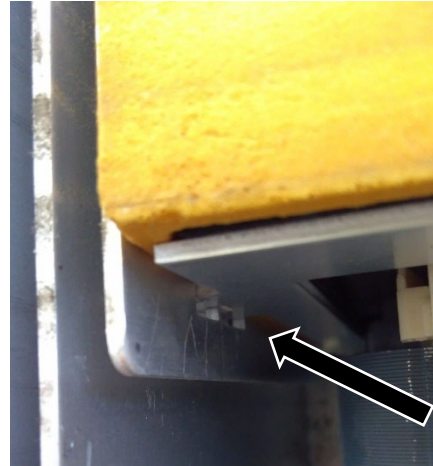


Made in Germany
ebmpapst
EM3038-102 nm
55138.14740
25V AC 50/60Hz
290 16 012
2914
DEU/A

4. Remove tube C & D (note where is C/D)



5. Pull out foam box with air pump
(Metal frame fixed on left hand side)

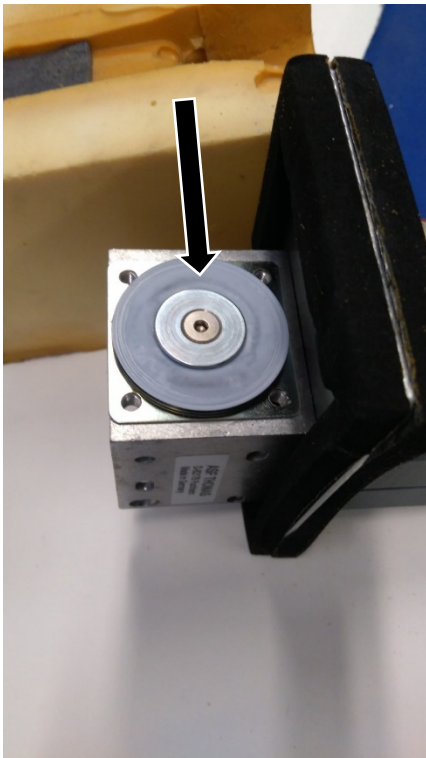


6. Remove foam

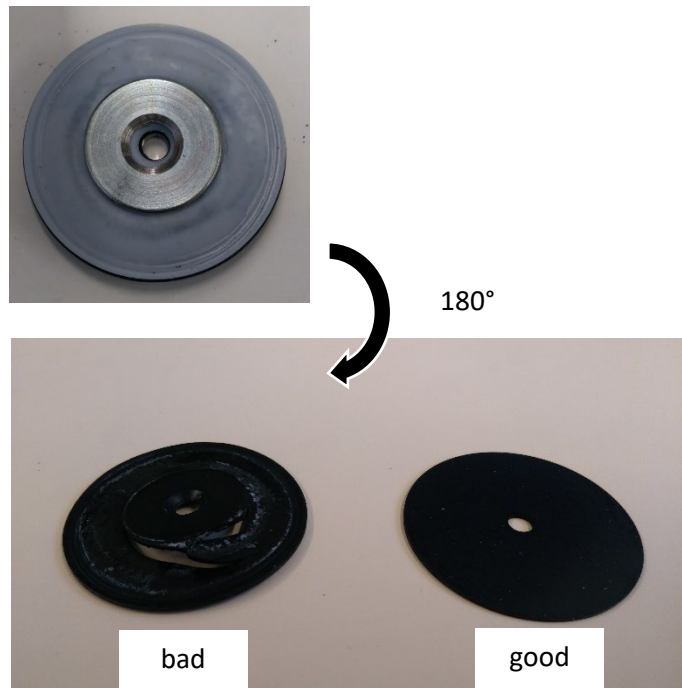


7. Unscrew 4 screws

8. Unscrew membrane



9. Check membrane (disruption?)



10. If membrane is disrupted → replace

11. Assembly in inverted order

Important: make sure that membrane is positioned well & tube C & D should not be clamped by foam box